



# GMT MONTHLY MEMBERSHIP PROGRESS REPORT

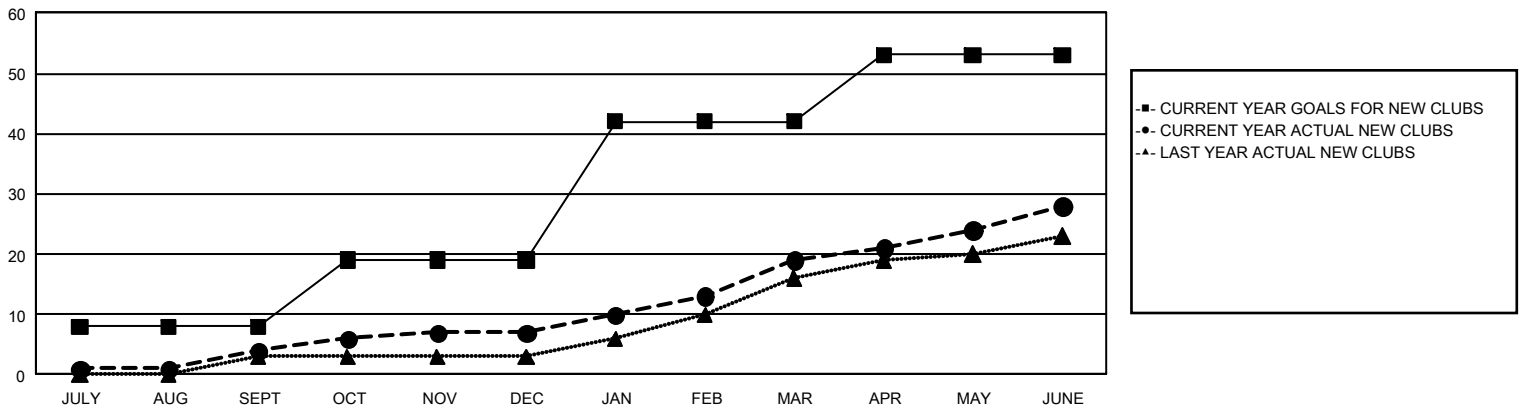
## GAT Constitutional Area 5 - Japan

Results as of: 6/30/2025

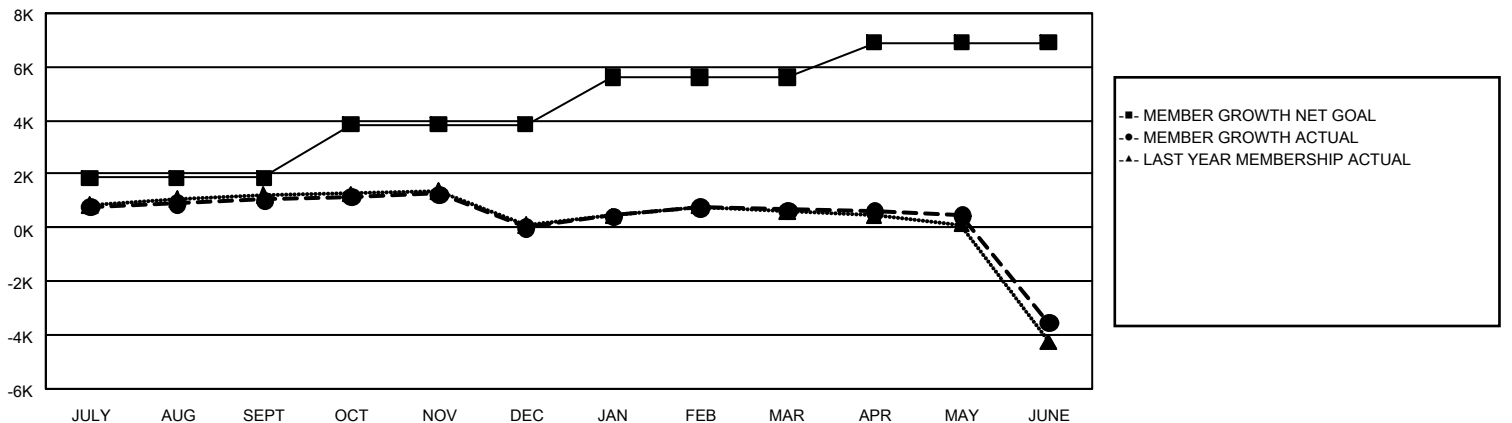
REPORT DOES NOT INCLUDE CLUBS IN UNDISTRICTED AREAS.

Clubs				Members			
RESULTS FOR 2024-2025				RESULTS FOR 2024-2025			
QUARTER	NEW CLUB GOAL	NEW CLUBS	DROPPED CLUBS	QUARTER	MEMBER GROWTH NET GOAL	MEMBER GROWTH ACTUAL	DROPPED MEMBERS ACTUAL (including transfers)
JULY/AUG/SEPT	8	4	3	JULY/AUG/SEPT	1,850	2,829	1,555
OCT/NOV/DEC	11	3	11	OCT/NOV/DEC	1,994	1,433	2,334
JAN/FEB/MAR	23	12	6	JAN/FEB/MAR	1,787	2,186	1,406
APR/MAY/JUNE	11	9	60	APR/MAY/JUNE	1,271	2,316	6,169

GOALS AND ACTUAL NEW CLUBS CUMULATIVE



GOALS AND ACTUAL MEMBERS CUMULATIVE



DROPPED CLUBS: 80

### DROPPED MEMBERS

DECEASED	791
CLUB CANCELLED	197
OTHER	10,336
TOTAL	11,324

1,921 CLUBS OF 2,730 ADDED 1 OR MORE NEW MEMBERS

[CLICK HERE FOR CUMULATIVE MEMBERSHIP DATA](#)

### GENDER DISTRIBUTION

MALE	69,535 (77.52%)
FEMALE	20,147 (22.46%)

TOTAL FAMILY UNIT MEMBERS	24,704
FAMILY MEMBERS PAYING HALF DUES	13,708